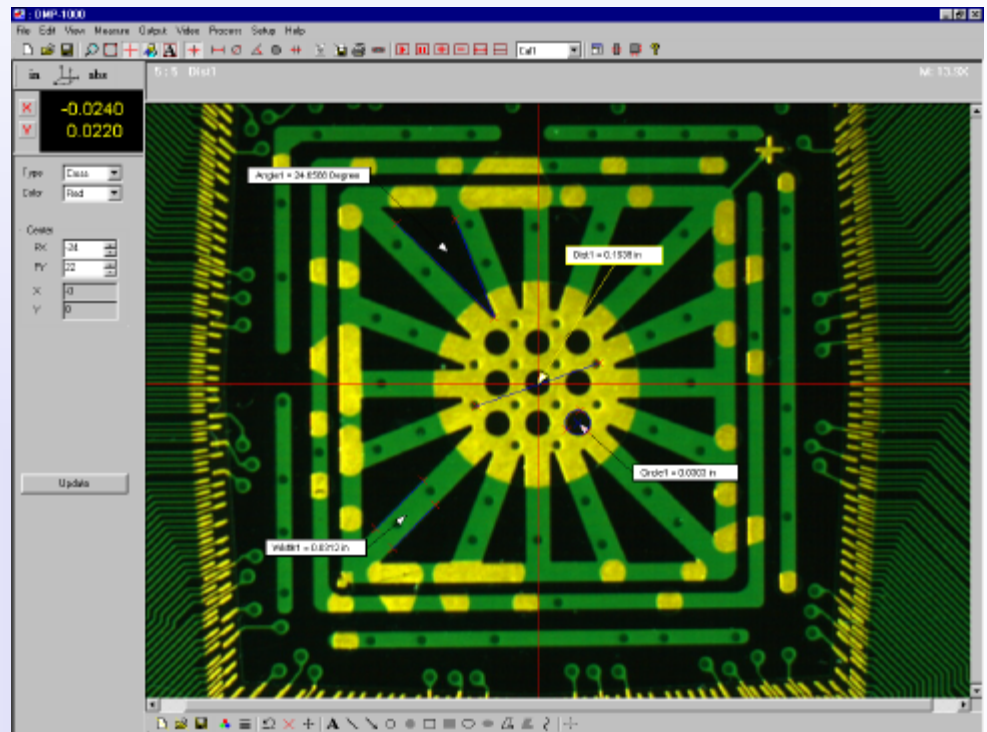


DMP-1000

Imaging and Measurement Software

- Support FireWire Digital Camera or Frame Grabber for Live Display, Measurement and Annotation
- Image Processing and Comparison
- Handle Large Size of color or monochrome Images
- Save Images with Annotation in many popular formats
- Automatic Edge Detection
- High Precision Measurement
- Flexible Data Formatting
- Real Time Data to Spreadsheet
- Direct DRO Measurement
- Built In Comparison Patterns.



The DMP-1000 is designed as a software accessory for your video systems. The software provides functions for your daily usage, such as image documentation, image annotation, measurement and visual inspection. The software is very easy to use and provides a low cost solution to improve your productivity.

The software acquires images from different sources, such as frame grabber, FireWire (IEEE 1394), TWAIN, files and clipboard, and displays them on your computer screen. The software reads and writes images in many file formats and handles standard size to large size of images. In live mode with a frame grabber or FireWire digital camera, the software shows image in real time. You can view, analyze, process or measure the image. You can compare archived images to a live image or other archived images in split screen, overlay and blink modes facilitating rapid comparison between a "known standard" and an image to be inspected. Then you can save, print or output image, or image with graphical results or annotation.

The software uses advanced edge-detection technology and gives you sub-pixel accuracy for your measurement. If the edge detection is enabled, you do not need to select a point exactly on the edge. The software will automatically search the edge for you and will deliver fast, reliable and repeatable measurement results. You can format measurement results and send them to spreadsheet in real-time. The calibration is simple, easy and automatic.

The software is a true 32-bit application that works with Windows 98SE/ME, Windows NT4, Windows 2000/ XP. It takes advantage of the latest operating systems, and provides a familiar, graphical environment. It is used for product inspection, quality control, training, class room or laboratory applications.

ZView, Inc.

ZView, Inc.
5151 Oceanus Drive, Suite 108
Huntington Beach, CA 92649
USA

Tel: (714) 892-7481
Fax: (714) 892-7451
Email: info@zview.com
Web: www.zview.com

Images

Source	Capture	View	Processing	Comparison	Format
<ul style="list-style-type: none"> • Frame Grabber • FireWire • TWAIN • File • Clipboard 	<ul style="list-style-type: none"> • Image • Image with annotation • Screen 	<ul style="list-style-type: none"> • Pixel • Zoom In • Zoom Out • 1:1 • Full Screen 	<ul style="list-style-type: none"> • Histogram • Grayscale • Color Correction • Filters • Effects • Sizing 	<ul style="list-style-type: none"> • Overlay • Subtract • Blink • Compare 	<ul style="list-style-type: none"> • .BMP • .JPG • .TIF • .PCX • .PNG • .PCT • .FPX

Annotation



- Color
- Line Width
- Delete
- Edit
- Text
- Line
- Arrow Line
- Circle
- Filled Circle
- Rectangle
- Filled Rectangle
- Ellipse
- Filled Ellipse
- Polygon
- Filled Polygon
- Curve

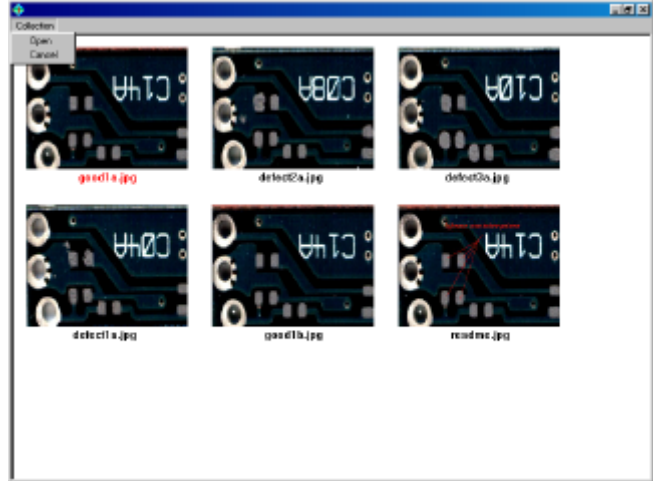
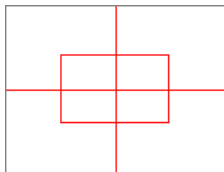


Image Collection

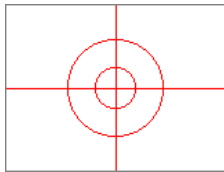
Measurement Template



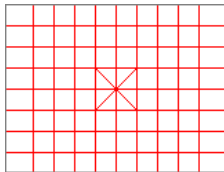
A movable crosshair



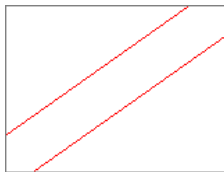
A sizable and movable rectangle with tolerance zone



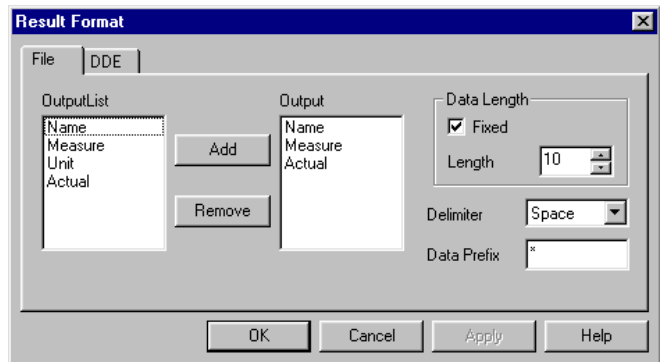
Two sizable and movable circles



A sizable and movable grid



Two sizable and rotatable lines with tolerance zone



Result Format

Measurement

Calibration

- Two Points
- Rectangle
- Square
- Circle

Measure

- Distance
- Circle
- Angle
- Area
- Width
- Length

Results

- Formatting
- Print
- Save
- Real-time to Spreadsheet