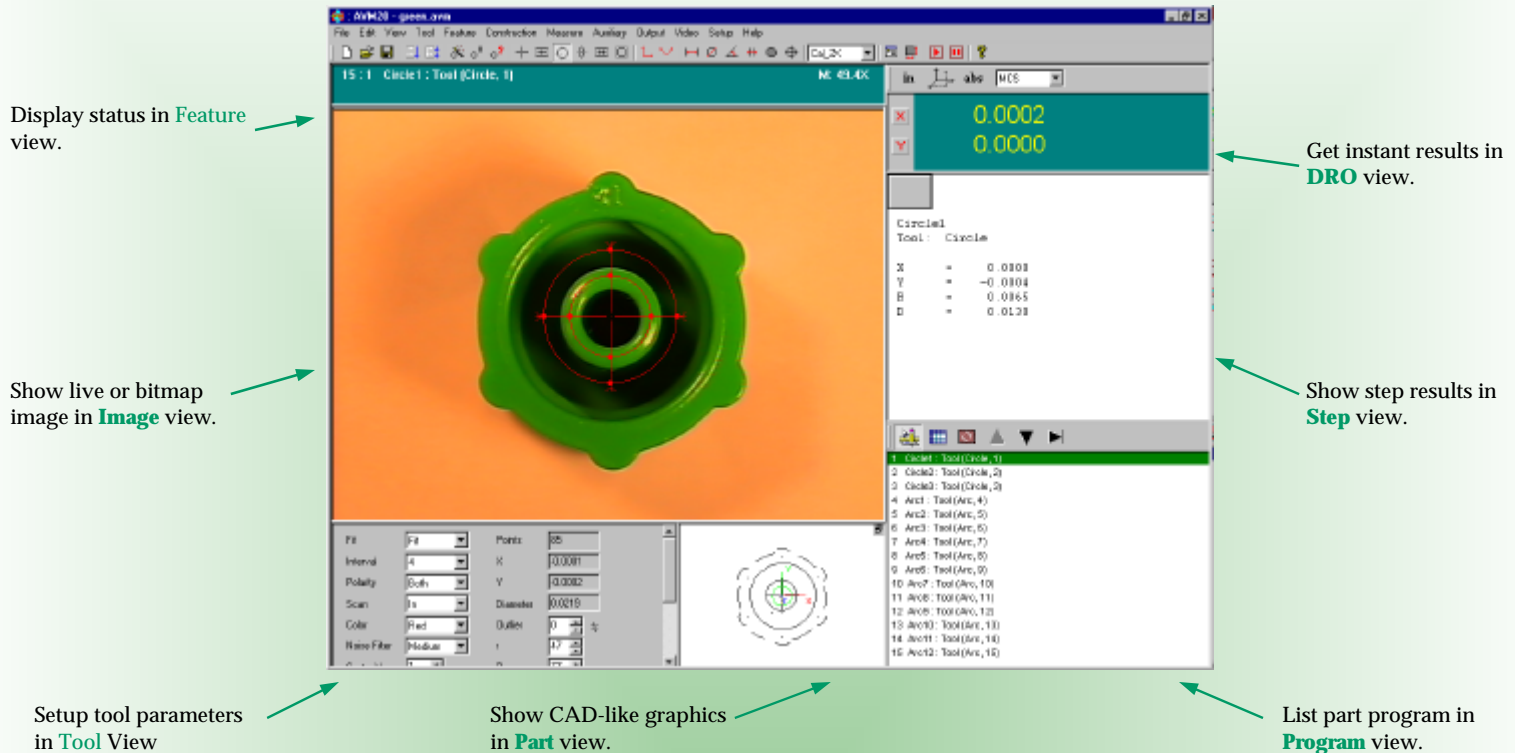


AVM20 Dimensional Measurement Software



The AVM20 software from ZView is a PC-based field of view dimensional measurement software that turns a conventional microscope into a powerful measurement station. The software uses the latest digital image processing technology to analyze video images for dimensional measurement. It then compares the measurement to nominal values and tolerances to identify conditions of non-conformance. The software can also be integrated to your application.

The software is for Windows 95/98/M, Windows NT 4.0 and Windows 2000/XP. It takes the advantage of the latest operating systems and provides you a familiar, graphical environment to complete your measurement. The software can be easily linked to other Windows applications, such as spreadsheets and SPC packages. The AVM20 tolerance functions conform to ASME Y14.5M 1994.

The software is designed for image documentation, product inspection and quality control. The software provides a full range of functions for image capture, measurement, archival, image comparison, image and result output. The software is easy to use and it will deliver reliable and repeatable precision measurement results on the hardware of your choice.

ZView Inc.

5151 Oceanus Drive, Suite 108, Huntington Beach, CA 92649
Tel. (714) 892-7481
Fax. (714) 892-7451
Web: <http://www.zview.com>
E-Mail: info@zview.com

Main AVM20 Features

- Off-line or on-line measurement. Stand alone or integrated into your applications.
- Advanced edge detection for accurate measurement.
- Easy dimensional measurement with CAD-like graphics.
- Inch or millimeter units, Cartesian and Polar coordinates setting.
- Datum reference frame for alignment and tolerance.
- Part program play back.
- Save, open, run and edit part program capability.
- Up to 32000 points per feature.
- Group editing.
- Color or B/W image acquisition, archiving and retrieval.
- Image annotation and comparison.
- Live image or bitmap image processing.
- Image Overlay with image, text or edge points.
- TWAIN support.
- Real-time linked to spreadsheet.
- Flexible data format for SPC and post processing.
- International language support.
- On-line help.

Features and Functions

File

- New
- Open
- Save
- Save As
- Properties
- Run
- Run Step
- Run Repeat
- Recent Files
- Exit

Output

- Format
- DDE Link
- Save Results
- Print Results
- Edge Points

Setup

- System Setup
- Lock Tool X
- Lock Tool Y
- Calibration

Tool

- Find
- Teach
- Copy
- Test
- Update
- Edit
- Crosshair Tool
- Edge Tool
- Circle Tool
- Arc Tool
- Linewidth Tool
- Slot Tool
- Area Tool
- Focus Tool

Auxiliary

- Comment
- Prompt
- Calibrate X
- Calibrate Y
- Set Calibration
- Camera

Measure

- Edit
- Distance
- Circle
- Linewidth
- Angle
- Area
- Position
- Circularity
- Concentricity
- Straightness
- Angularity
- Parallelism
- Perpendicularity

View

- Zoom In
- Zoom Out
- Zoom Window
- Zoom All
- Zoom View
- Show Drawing Bar
- Show Annotation

Video

- Live Image
- Capture
- Open Image
- Open Collection
- Import Image
- Histogram
- Pixel
- Enlarge
- Maximize
- Reference
- Overlay
- Subtract
- Blink
- Compare
- Copy Image
- Save Image
- Save Collection
- Print Setup
- Print Preview
- Print

Help

- Help
- About

Construction

- Zero
- Frame
- Offset
- Project
- Mirror
- Rotate
- Parallel
- Intersect
- Bisect
- Perpendicular

Annotation

- Color
- Line Width
- Text
- Line
- Arrow
- Circle
- Rectangle
- Ellipse
- Polygon
- Curve

Edit

- Setup
- Modify
- Insert
- Delete
- Select All
- Remove Last
- Rename
- Print
- Cancel
- Duplication
- Set Break Point
- Clear Break Point

Feature

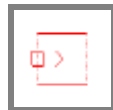
- Tool
- Relative Tool
- Point
- Line
- Arc
- Circle

Image Tools



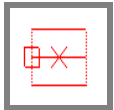
Crosshair Tool: Manual define a single point.

Edge Tool: Automatically find all points on an edge.



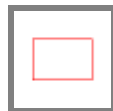
Circle Tool: Automatically find all points on a circle.

Arc Tool: Automatically find all points on a radius.



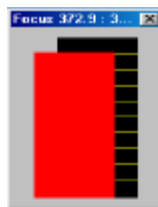
Linewidth Tool: Automatically find all points on two parallel edges.

Area Tool: Automatically find the area and centroid of an area.

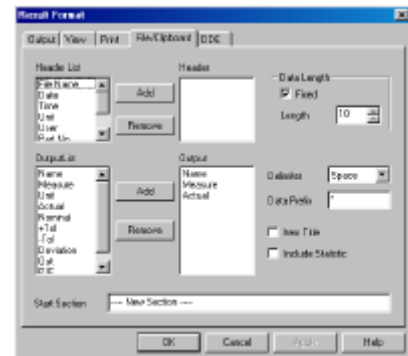


Slot Tool: Automatically find the points on four sides.

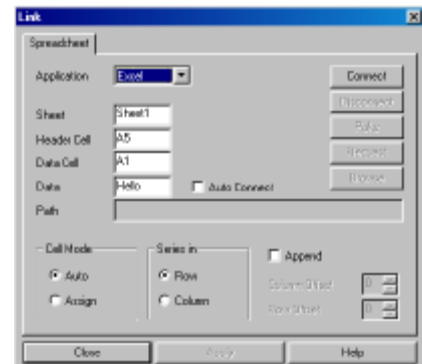
Focus Tool: Focus Bar help to determine the best focus.



Results



Flexible and independent result formats for various outputs.



Seamless and real-time link to spreadsheet.