

The AVM10 software from ZView is a PC-based field of view, dimensional measurement software that turns a conventional microscope into a powerful measurement system. The software uses the latest digital image processing technology to analyze video images for dimensional measurement. The AVM10 measurement functions conform to ASME Y14.5M 1994.

The software is for Windows 95/98/ME and Windows NT4.0 and Windows 2000/XP. It takes the advantage of the latest operating systems and provides you a familiar, graphical environment to complete your measurement. The software can be easily linked to spreadsheet applications.

The software is designed for image documentation, product inspection and quality control. The software provides a full range of functions for image capture, measurement, archival, image comparison, image and result output. The software is easy to use and it will deliver reliable and repeatable precision measurement results on the hard-

Main AVM10 Features

- Easy access screen layout for your speedy measurement.
- Advanced edge detection for accurate measurement.
- Find tool function to simplify the image tool placement.
- Supports inch or millimeter units, Cartesian and Polar coordinates.
- Datum reference frame for alignment.
- Color or B/W image acquisition, archiving and retrieval.
- Live image or bitmap image processing.
- Up to 32000 points per feature.
- Flexible data format for SPC and post processing.
- Real-time result to printer, data file or spreadsheet.
- Image Overlay with image, text or edge points.
- Image annotation and comparison.
- TWAIN support.
- Supports varieties of frame grabbers.
- International language support capability.
- On-line help.

ZView, Inc.

5151 Oceanus Drive, Suite 108, Huntington Beach, CA 92649

Tel. (714) 892-7481

Fax. (714) 892-7451

Web: <http://www.zview.com>

E-Mail: info@zview.com

Features and Functions

File

- New
- Open Image
- Save Image
- TWAIN
- Print Setup
- Print Preview
- Print
- Open Annotation
- Save Annotation
- Exit

Edit

- Undo
- Draw Text
- Delete Text
- Clear Text
- Copy Image
- Paste Image

View

- Enlarge
- Maximize
- Histogram
- Pixel
- Print Results
- Show Drawing Bar
- Show Edges
- Show Annotation

Tool

- Find
- Teach
- Test
- Crosshair Tool
- Edge Tool
- Circle Tool
- Arc Tool
- Linewidth Tool

Tolerance

- Distance
- Circle
- Linewidth
- Angle
- Area
- Position
- Circularity
- Concentricity
- Straightness
- Angularity
- Parallelism
- Perpendicularity

Output

- Format
- DDE Link
- Edge Points
- Save Results
- Print Results

Datum

- Zero
- Frame

Annotation

- Color
- Line Width
- Text
- Line
- Arrow
- Circle
- Rectangle
- Ellipse
- Polygon
- Curve

Help

- Help
- About

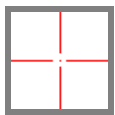
Video

- Live Image
- Capture
- Reference
- Overlay
- Subtract
- Blink
- Compare
- Grayscale
- Color Correction
- Adjustment
- Properties

Setup

- System Setup
- Lock Tool X
- Lock Tool Y
- Calibrate X
- Calibrate Y
- Calibration

Image Tools



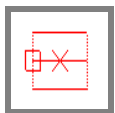
Crosshair Tool: Manual define a single point.

Edge Tool: Automatically find all points on an edge.



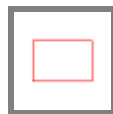
Circle Tool: Automatically find all points on a circle.

Arc Tool: Automatically find all points on a radius.



Linewidth Tool: Automatically find all points on two parallel edges.

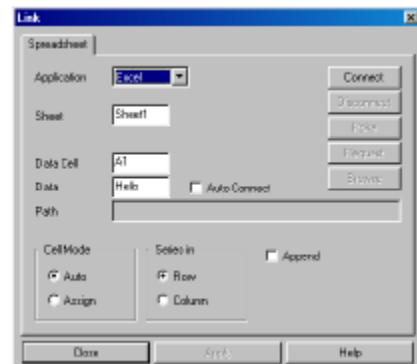
Area Tool: Automatically find the area and centroid of an area.



Results



Flexible and independent result formats for various outputs.



Seamless and real-time link to spreadsheet.